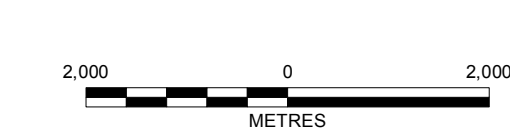


EXISTING PIPELINE ROUTE
PROPOSED PIPELINE ROUTE

ATTENTION - THIS DATA IS OWNED BY SASKENERGY, ITS AFFILIATES OR THIRD PARTIES AND IS PROVIDED TO YOU ON THE FOLLOWING TERMS:
 1) DATA SHALL NOT BE DISCLOSED TO THIRD PARTIES OR USED FOR ANY OTHER PURPOSE THAN AGREED;
 2) DATA IS PROVIDED 'AS IS' WITHOUT WARRANTY OR REPRESENTATION OF ACCURACY, TIMELINESS OR COMPLETENESS AND IS CURRENT TO DATE INDICATED;
 3) LOCATIONS OF GAS LINES ARE APPROXIMATE ONLY AND YOU MUST PLACE A REQUEST FOR EXACT FACILITY LOCATES TO SASKIST CALL CORPORATION, TOLL FREE AT 1-866-828-4888 OR THROUGH WWW.SASKISTCALL.COM;
 4) YOU AGREE TO INDEMNIFY SASKENERGY FOR ANY CLAIM FOR DAMAGES THAT ARISES OUT OF YOUR IMPROPER USE OR DISCLOSURE OF THE DATA.

FOR COMPLETE LISTING OF TERMS AND CONDITIONS ATTACHED TO AND INCORPORATED INTO SASKENERGY'S LICENSE AND AUTHORIZATION OF YOUR USE OF THIS DATA SEE THE FOLLOWING WEBSITE LINKS: [HTTP://WWW.SASKENERGY.COM/DISCLAIMER.ASP](http://WWW.SASKENERGY.COM/DISCLAIMER.ASP) OR [HTTP://WWW.TRANSAS.COM/DISCLAIMER.ASP](http://WWW.TRANSAS.COM/DISCLAIMER.ASP)

LEGEND	
	EXISTING COMPRESSOR STATION AND PROPOSED EXPANSION
	PROPOSED ROUTE
	PROPOSED ROUTE (ALTERMATE)
	SEPARATE TRANSAS PROJECTS - ROUTE ACQUIRED
	POPULATED PLACE
	EXISTING TRANSGAS PIPELINE
	PRIMARY HIGHWAY
	SECONDARY HIGHWAY
	LOCAL ROAD
	RAILWAY
	WATERCOURSE
	PARK
	URBAN MUNICIPALITY
	WATERBODY
	WETLAND
	WOODED AREA



NOTE
 1. LINE THICKNESS SHOWN FOR PROPOSED ROUTES IS NOT INDICATIVE OF RIGHT-OF-WAY WIDTH.
 REFERENCE
 1. DATA OBTAINED FROM GEOSATIS, DEPARTMENT OF NATURAL RESOURCES CANADA. ALL RIGHTS RESERVED.
 PROJECTION: UTM ZONE 13 DATUM: NAD83